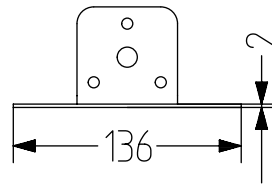
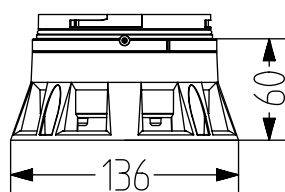
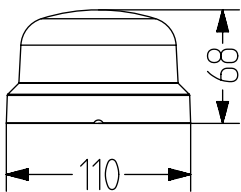


RCMM+RBA Compact LED multi colour beacon with audible base

- 110 mm Ø large compact modular LED multi colour beacon
- milky lens provides nice, homogenous light
- all 7 colours externally controllable
- LED steady light
- audible base with 32-tone sounder
- 95 dB sound pressure, 3 tones externally controllable
- unique, appealing product design
- high protection class IP66 & impact resistance IK08
- metal bracket for mounting on walls (accessory)
- especially suitable for construction work and general applications



TECHNICAL DATA

Size	110 mm
Housing	Polycarbonate
Lens	Polycarbonate, smooth (milky-white), colours: red, yellow, green, blue, clear, magenta, turquoise
Type of mounting	Any, conduit mounting
Cable entry	Cables are inserted from below
Connection technology	Screw terminal
Leakage current	3mA

Beacon type	Steady beacon
Light source	LED (10 LEDs)
Duty cycle	100 %
Service life	Light source > 50.000 h
Operating temperature	-30 / +60°C
Degree of protection	IP66, UL Type 4, 4X, 13
Impact resistance	IK08
Volume	Up to 95 dB
Tone	32 tones, 3 tones can be switched externally



RCMM+RBA

ORDER DATA

Type	24-48VAC/DC	110-240VAC	Nominal voltage	Voltage range (V)	Nominal current
RCMM	850570408		24/48VAC/DC	+/-10%	160mA
		850570313	110/120/230/240VAC	+/-10%	45mA

Type	Type of product	24-48 V AC/DC	110-240 V AC	Voltage range (V)	Nominal current	Mains frequency
RBA	Audible base for R series beacons	850535408		+/-10%	230mA	50-60 Hz
			850535313	+/-10%	70mA	50-60 Hz



RWA

ACCESSORIES

Type	Type of accessory	Order number
RWA	Metal bracket for audible bases	850531900